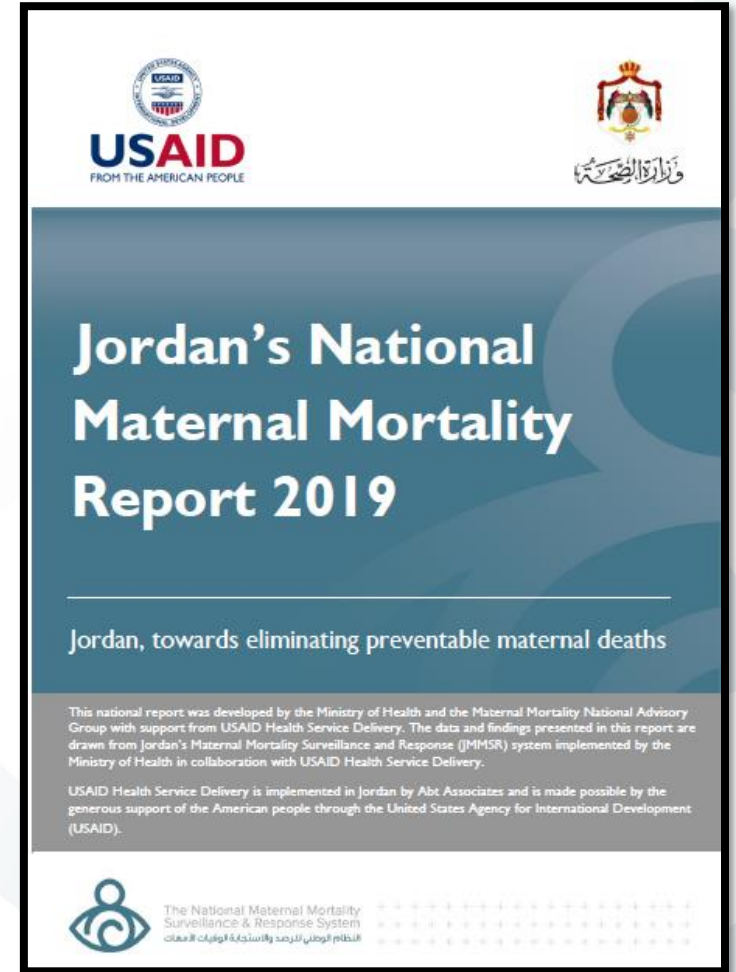


# Reporting Period

The results in this presentation cover the reporting period from

**January 1-December 31, 2019**



# Jordan's Maternal Mortality Ratio (MMR)

- During the reporting period, **1,451 deaths among women of reproductive age** occurred.
- A total of **63 deaths** were identified as **maternal**.
- A total number of **194,643 live births** occurred during the same period.



# Jordan's **MMR** for 2019

- Jordan's **MMR** was calculated based on active surveillance at: **32.4 per 100,000 live births.**



# Maternal Deaths by Demographic Characteristics

- **Maternal Age Group**
- **Nationality**
- **Educational Level**
- **Employment Status**
- **Place of Residence and Place of Death**



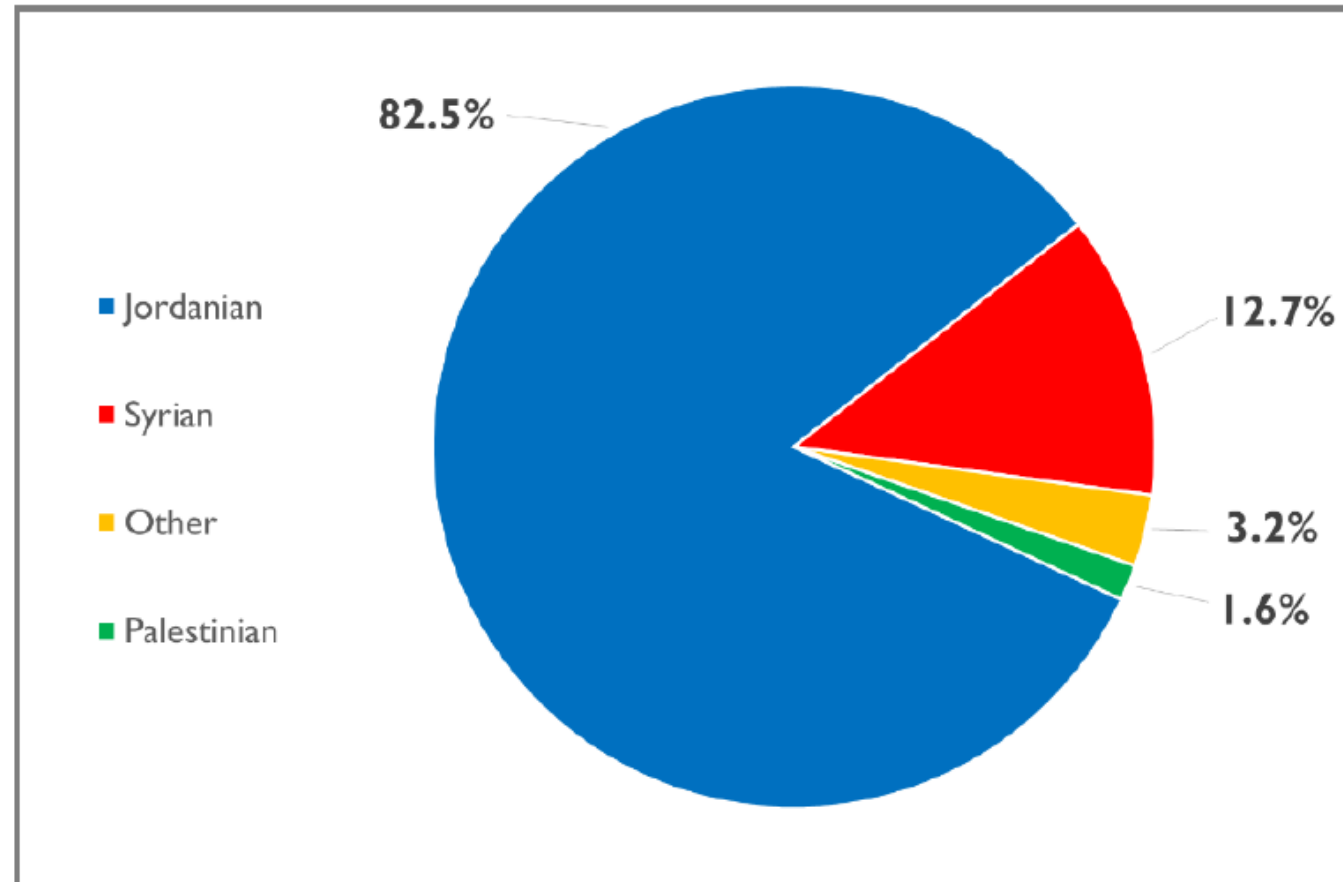
# Maternal Deaths by Age Group

*Table 1: Maternal Deaths by Age Group*

Age Group	Number of Maternal Deaths	Percent
15-19	1	1.6
20-24	8	12.7
25-29	18	28.6
30-34	15	23.8
35-39	14	22.2
40-49	7	11.1
<b>Total</b>	<b>63</b>	<b>100</b>



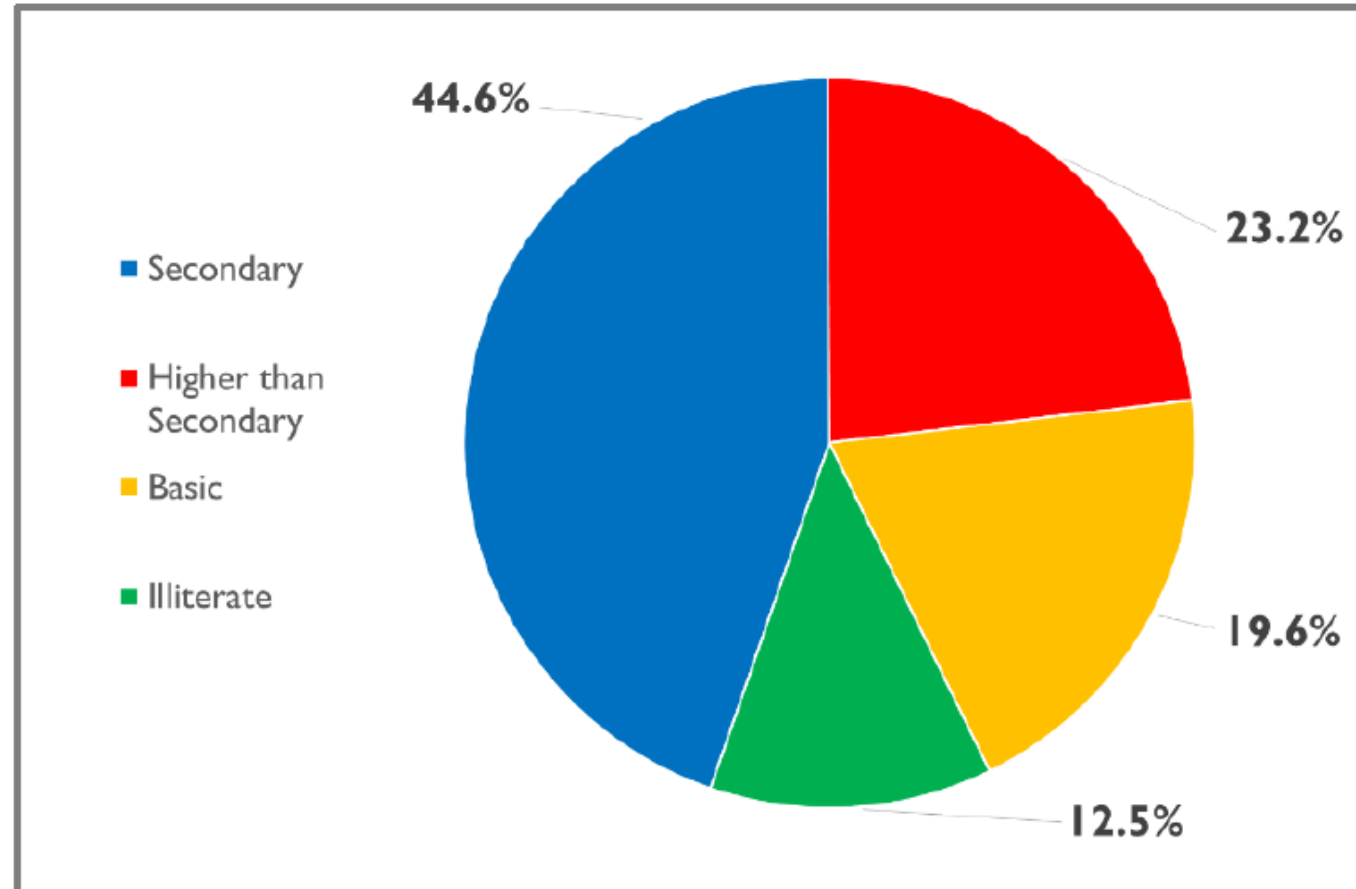
# Maternal Deaths by Nationality



**Figure 1: Maternal Deaths by Nationality**



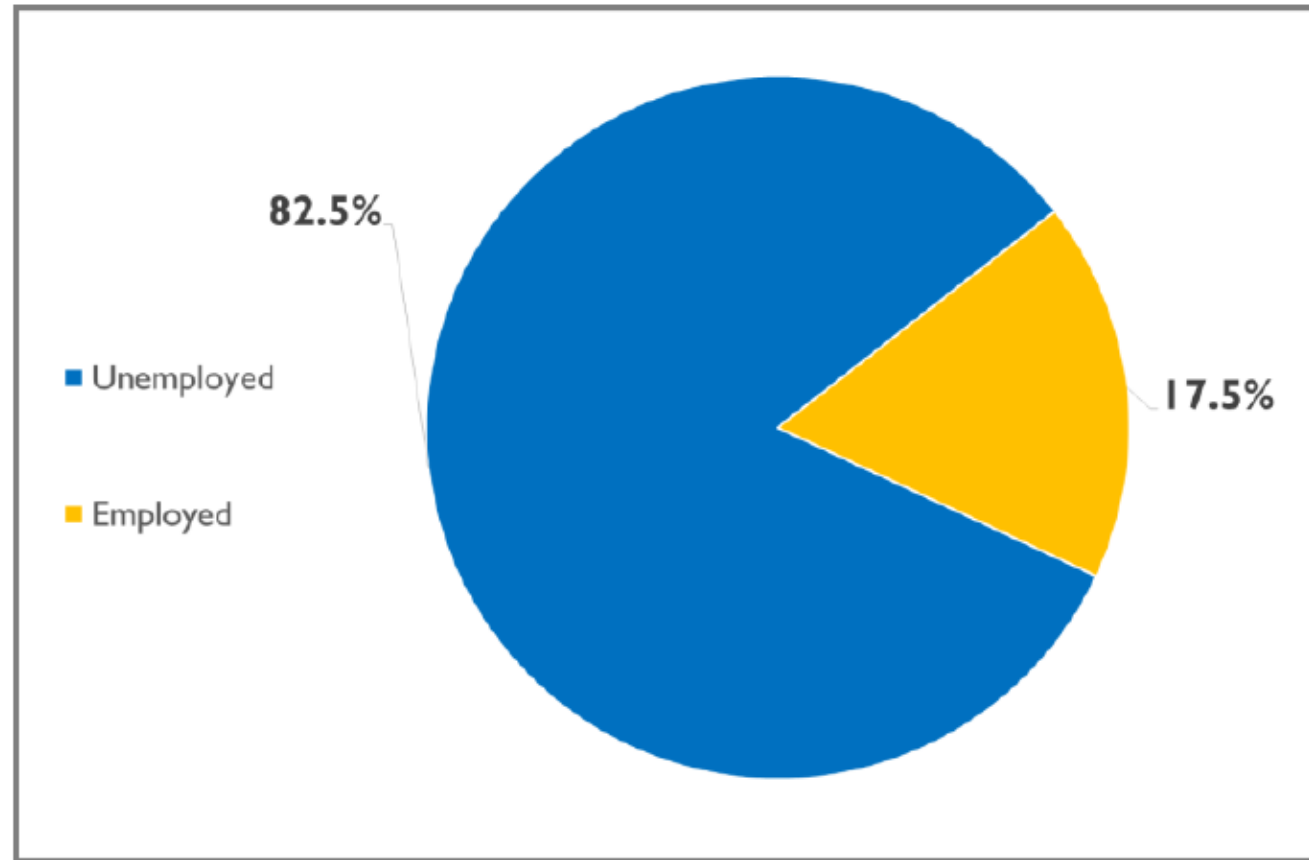
# Maternal Deaths by Educational Level



**Figure 2: Maternal Deaths by Educational Level**



# Maternal Deaths by Employment Status



**Figure 3: Maternal Deaths by Employment Status**





# Maternal Deaths by Place of Death & Place of Residence

*Table 2: Maternal Deaths by Place of Death and Place of Residence*

<b>Governorate</b>	<b>Place of Death Number (Percent)</b>	<b>Place of Residence Number (Percent)</b>
Amman	34 (54.0)	21 (33.3)
Zarqa	8 (12.7)	11 (17.5)
Karak	5 (7.9)	6 (9.5)
Irbid	4 (6.3)	6 (9.5)
Jerash	4 (6.3)	5 (7.9)
Mafraq	4 (6.3)	4 (6.3)
Madaba	2 (3.2)	4 (6.3)
Balqa	1 (1.6)	2 (3.2)
Ma'an	1 (1.6)	1 (1.6)
Tafilah	1 (1.6)	3 (4.8)
<b>Total</b>	<b>63</b>	<b>100</b>



# Maternal Deaths by Clinical Characteristics

- **Parity**
- **Timing of Death**
- **Antenatal Care**
- **Mode of Delivery**



# Maternal Deaths by Parity

*Table 3: Maternal Deaths by Parity*

Parity	Number of Maternal Deaths	Percent
<b>Nulliparous</b> (women who have never given birth)	<b>8</b>	<b>12.7</b>
<b>Multipara</b> (women who have given birth more than once)	<b>55</b>	<b>87.3</b>
<b>Total</b>	<b>63</b>	<b>100</b>



# Maternal Deaths by Timing of Death

The majority of deaths in the postpartum period (after delivery) took place between one and seven days postpartum (47.6%).

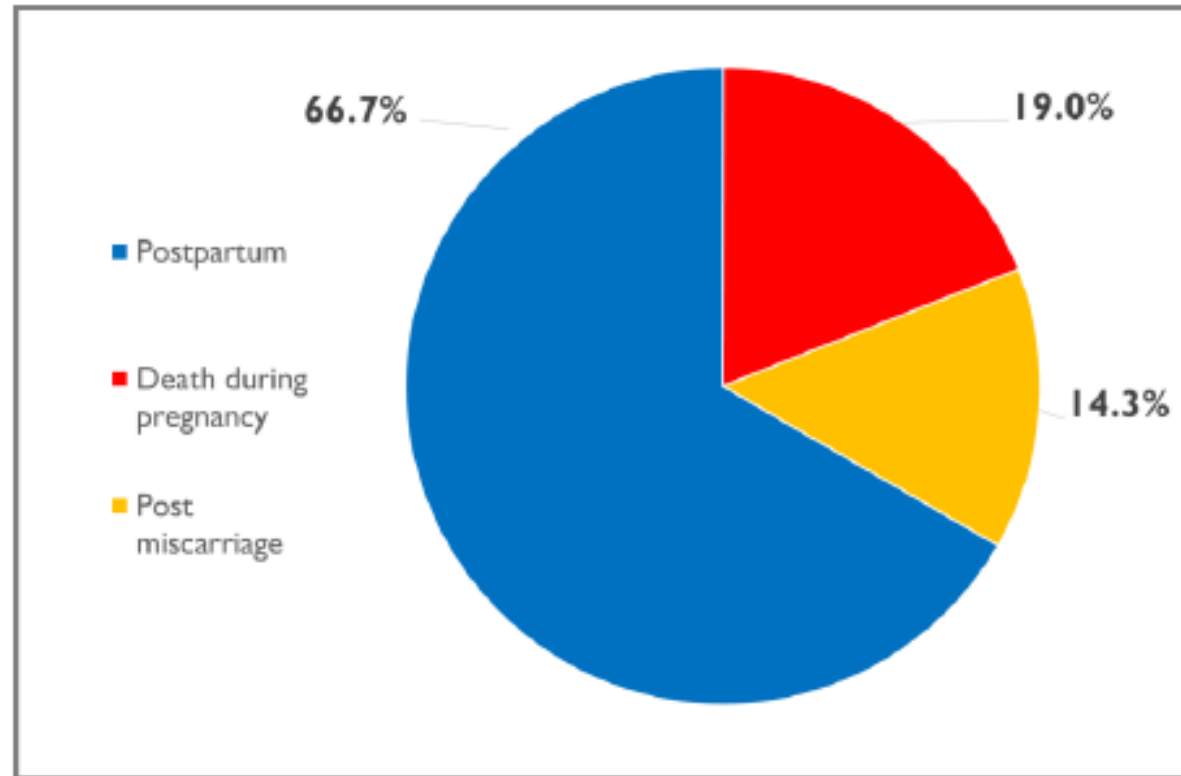


Figure 4: Maternal Deaths by Timing of Death



# Maternal Deaths by Antenatal Care Visits

**Table 4: Maternal Deaths by Antenatal Care Visits**

<b>Antenatal Care Visits</b>	<b>Number of Maternal Deaths</b>	<b>Percent</b>
1 to 3 visits	6	11.8
4 to 7 visits	25	49.0
8 visits and above	20	39.2
<b>Total*</b>	<b>51</b>	<b>100</b>

*\*The number of antenatal care visits was missing for twelve cases.*



# Maternal Deaths by Mode of Delivery

**30 of the 63 maternal death cases (47.6%) delivered by a cesarean section, 7 of these were primary cesarean section deliveries.**

*Table 5: Maternal Deaths by Mode of Delivery*

Mode of Delivery	Number of Maternal Deaths	Percent
Cesarean delivery	30	47.6
Vaginal delivery	12	19
Miscarriage	8	12.7
Postmortem cesarean	1	1.6
Hysterotomy	1	1.6
No delivery	11	17.5
<b>Total</b>	<b>63</b>	<b>100</b>



# Maternal Deaths by Causes of Death

**Table 6: Maternal Deaths by Causes of Death**

	<b>Number</b>	<b>Percent</b>
<b>Direct Causes</b>	<b>39</b>	<b>62.9</b>
Other obstetric complications	14	22.6
Obstetric hemorrhage-postpartum hemorrhage	11	17.7
Hypertensive disorders in pregnancy, childbirth, and the puerperium	6	9.7
Pregnancy related infection-puerperal sepsis	4	6.5
Pregnancy with abortive outcome	3	4.8
Unanticipated complications of management- blood transfusion complications	1	1.6
<b>Indirect Causes</b>	<b>23</b>	<b>37.1</b>
Other maternal diseases	20	32.3
Diabetes mellitus in pregnancy	1	1.6
Maternal infectious and parasitic diseases-tuberculosis	1	1.6
Pre-existing hypertension	1	1.6
<b>Total*</b>	<b>62</b>	<b>100</b>

*\*The cause of death could not be specified for one case.*

# Maternal Deaths by Level of Delay

**Table 7: Maternal deaths by level of delay**

<b>Level of Delay</b>	<b>Number of Maternal Deaths</b>	<b>Percent</b>
Delay in seeking care	9	14.5
Delay in receiving care	30	48.4
Delay in seeking and reaching care	1	1.6
Delay in seeking and receiving care	11	17.7
No delay	11	17.7
<b>Total*</b>	<b>62</b>	<b>100</b>

*\*The cause of death could not be specified for one case.*





- All key players in the implementation of the JMMSR system showed unwavering commitment at all levels .
- As a result of these efforts, Jordan now has accurate data to describe different aspects of maternal mortality.





**No woman  
should die**  
whilst bringing  
life into the world





**USAID**  
FROM THE AMERICAN PEOPLE



# Thank You!

**Disclaimer**

The contents in this presentation do not necessarily reflect the views of USAID or the United States Government.

**Acknowledgement:**

Jordan's Maternal Mortality Surveillance and Response System (JMMSR) was developed under USAID Health Service Delivery Implemented in Jordan by Abt Associates and is made possible by the generous support of the American people through the United States Agency for International Development (USAID).



Jordan's Maternal Mortality  
Surveillance & Response System  
النظام الوطني للرصد والإستجابة لوفيات الأمهات

